

ProClarity Analytics Server 5.3

Product Datasheet

ProClarity Analytics Server 5.3

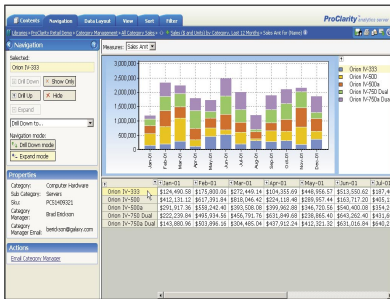
The ProClarity Analytics Server (PAS) is the foundation of the ProClarity Analytics Suite. The ProClarity Analytics Server centrally controls the management and distribution of business logic and delivers powerful ad-hoc analytic capabilities, data visualization and navigation to users across the entire enterprise. It also manages important infrastructure components such as data connectivity, query management, security, performance and administration.

User-interface Rendering

Analysts, decision-makers and consumers of analytics can interact with PAS in a variety of ways;

ProClarity Web Standard

A truly zero-footprint, thin-client user interface used by decision-makers within the enterprise. ProClarity Web Standard

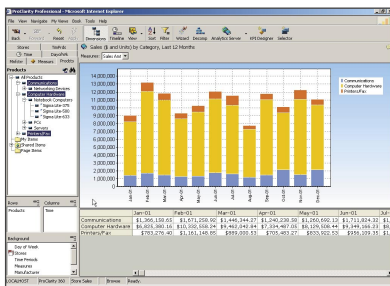


(pictured below) users consume the advanced analytics, best analytic practices and business rules that have been published to the Business Logic Server and are rendered to the user via the ProClarity Analytics Server. The ProClarity Web Standard

delivers powerful ad-hoc analytic functionality such as advanced data visualization and navigation to users, enabling them to drill down, cross drill, slice and drill to underlying detail.

ProClarity Web Professional

Designed to provide business analysts with the capability to conduct unstructured analysis of complex business problems such as root-cause analysis. In addition to powerful analytic functionality, the ProClarity Web Professional (pictured left) enables business analysts to create, publish and store definitions of business views, Key Performance Indicators (KPIs) and best analytic

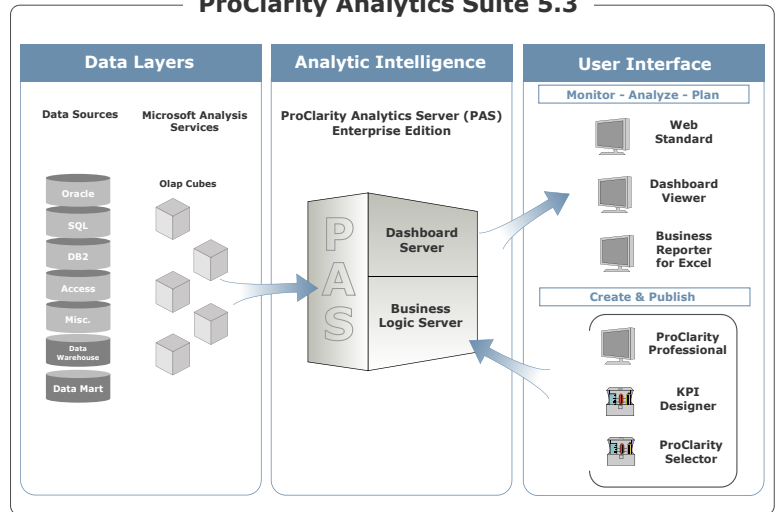


practices to the Business Logic Server. The ProClarity Web Professional which can be licensed with the Selector and KPI Designer tools, guides analysts through the process of creating, storing and managing centralized logic.

Business Reporter for Excel

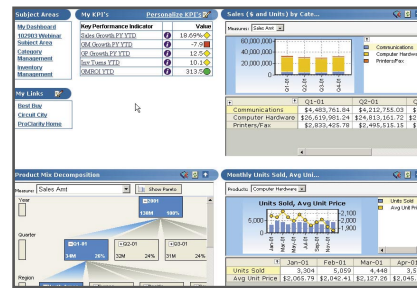
The ProClarity Business Reporter for Excel allows users to create sophisticated spreadsheet models that maintain live data-feeds. Users can also create high-quality formatted business reports in the familiar Excel spreadsheet environment.

ProClarity Analytics Suite 5.3



Dashboard Viewer

The ProClarity Dashboard Viewer (pictured below) enables users of



all types to monitor business performance indicators that have been defined within the Business Logic Server and rendered via the Dashboard Server to the user.

Query Management

Query management is a critical element of delivering a highly-scalable solution. The ProClarity Analytics Server translates users activity at the analytic intelligence layer into queries that the database can understand and returns results. To ensure maximum performance and scalability, ProClarity Analytics Server facilitates this through high-speed connection pooling and caching.

Data connectivity

Leveraging the Microsoft Analysis Services platform which is best in class at integrating data from disparate sources across the enterprise, the ProClarity Analytics Server can connect to data sources found in data warehouses, data-marts or data-staging areas.

Security

The ProClarity Analytics Server fully leverages Microsoft OLAP security as well as providing an additional layer of security at the repository level. The ProClarity Analytics Server may also be adapted to integrate with virtually any security model available: Active Directory, various types of LDAP and Single Sign On (SSO). Administrators of the ProClarity Analytics Server can set various levels of security to restrict access to publishing and viewing capabilities to the ProClarity Analytics Server.

**The power of
enterprise
understanding**

**Inc.
500**

**DM REVIEW
100
2003**



ProClarity Corporation
500 South 10th Street
Boise, Idaho 83702
(208) 344-1630
sales@proclarity.com

ProClarity International b.v.
Waterman 7b
5215MX's-Hertogenbosch
The Netherlands
+31.73.681.0800
sales@proclarity.nl



Scalability

ProClarity Analytics Server operates well in a clustered environment enabling simultaneous scaling to thousands of users.

Caching

High speed caching to ProClarity Analytics Server accelerates performance. The ProClarity Analytics Server caching engine ensures that previously requested queries are served up from our middle-tier cache, saving a round trip from PAS to the OLAP server—as well as clearing the cache as OLAP data is refreshed—so that cached data can be delivered near real-time with 100% accuracy.

Administration & management

ProClarity Analytics Server 5.3 features tools to make the administrator's job easier. The component distribution model allows for user-interface components or HTML—including custom user interfaces—to be distributed from a central point to both Internet Explorer and Netscape users.

New in version 5.3

- Enhanced memory management
- Support for new Microsoft platforms such as Sharepoint Portal Server 2003 and Reporting Services.

Technical requirements

Clients

- Windows 98SE, NT, 2000 and XP
- Internet Explorer 5.01, 6.0
- Netscape 7.02, 7.1
- Analysis Services

Analytics Server

- Windows 2000™ and 2003
- IIS 5.0™ and 6.0
- Analysis Services
- Briefing Book Repository: SQL Server 2000™

Office Integration

- Office 2000, XP and 2003
- Excel 97, 2000, XP and 2003

*64-bit SQL Server 2000™ is supported

Select customers

ABB Group
ABN AMRO
ACE Insurance
AT&T
Accredited Home Lenders
Ahold
Allstate
Aramark
Arkansas Children's Hospital
AstraZeneca
Blue Cross of Idaho
Chiquita Brands International
Clear Channel Communications
CompUSA
Eckerd Corporation
Ericsson
Genuine Parts
Hallmark Cards
Harrods
Hewlett-Packard
The Home Depot
InFocus
Information Resources, Inc.
International Rectifier
Jefferson Wells
Jiffy Lube
Kimberly Clark
Level 3 Communications
L'Oreal
Lockheed Martin
Lloyds TSB
Marshalls
Masco, Inc.
McDonald's France
Multek Multilayer Technology
Nabisco
NCCI Holdings, Inc.
Nordstrom
Option One Mortgage
PeaceHealth
Pennzoil QuakerState
Pfizer
Procter & Gamble
Publix Supermarkets
Reckitt Benckiser
Reuters
RiteAid
RMC Group
Roche
Royal & SunAlliance
Safeco
Schiesser
Shurgard Storage Centers
Siemens
Tenet Healthcare
Time, Inc.
Uniden
Union Standard Insurance
USDA
U.S. Navy – Naval Surface Warfare Center
Van Kampen Investments
Vanderbilt University Medical Center
Verizon
Veterans Health Administration
Vodafone
Weiser Lock
Wells Fargo
West Farm Foods
Winn Dixie Stores